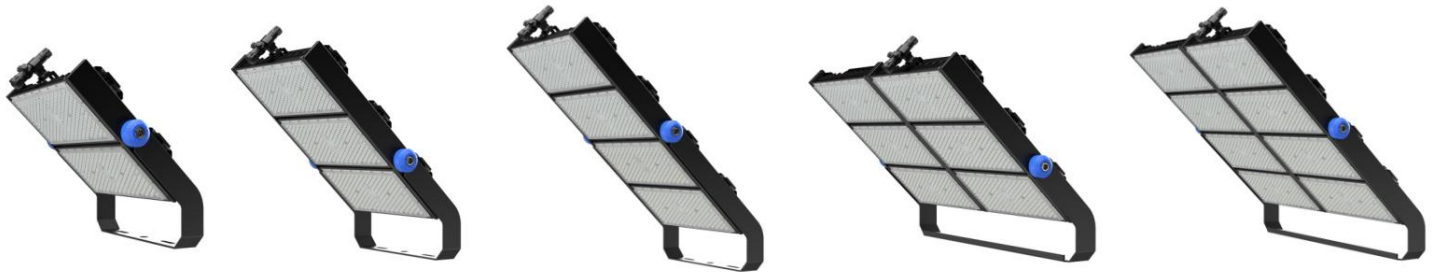


Galaxy series Sports&High Mast LED Floodlight



Features

- 1.Strong bracket, more solid installation
- 2.Optical PC lens, no-yellowing material.
- 3.Silicone waterproof sealing strip. UV-resistant material, reliable without failure.
- 4.3030 SMD light source design, luminous efficiency 160lm/W.
- 5.High thermal conductivity aluminum substrate, fast heat dissipation, reduce light decay.
- 6.ADC12 die-casting aluminum heat sink, the efficiency is up to 96W / M.K.
- 7.With laser light locator, easily adjust the direction of illumination to achieve maximum lux and uniformity.
8. The design of the heat dissipation respirator can avoid the problem of sealing failure caused by thermal expansion and contraction.
- 9.External waterproof power supply is installed on the special iron case, no contact with the lamp body, thermoelectric separation, longer life.

Applications

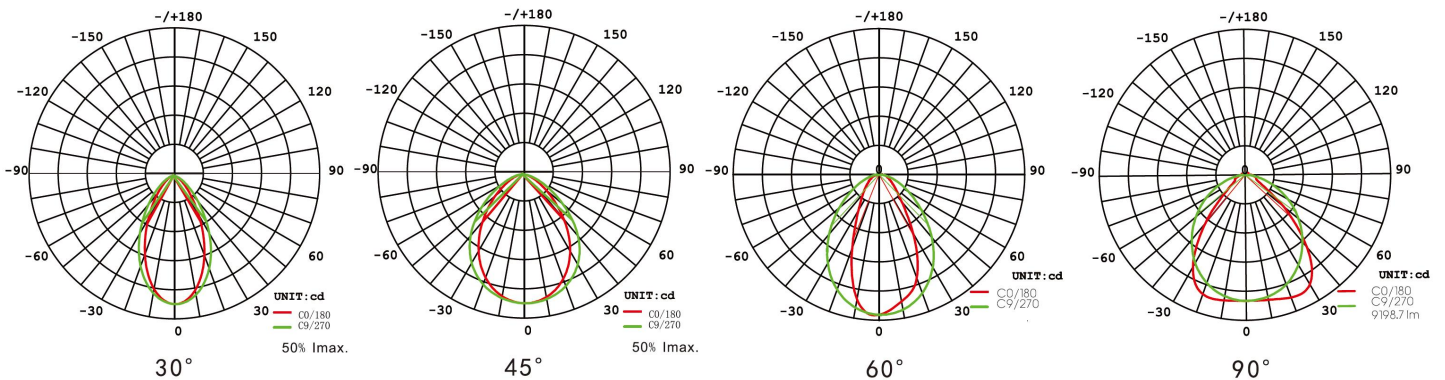
Sports lighting area: football field, badminton court, basketball court, baseball field, tennis court, table tennis field, racetrack. High pole lighting area: mining area, outdoor construction area, mobile tower lighting.



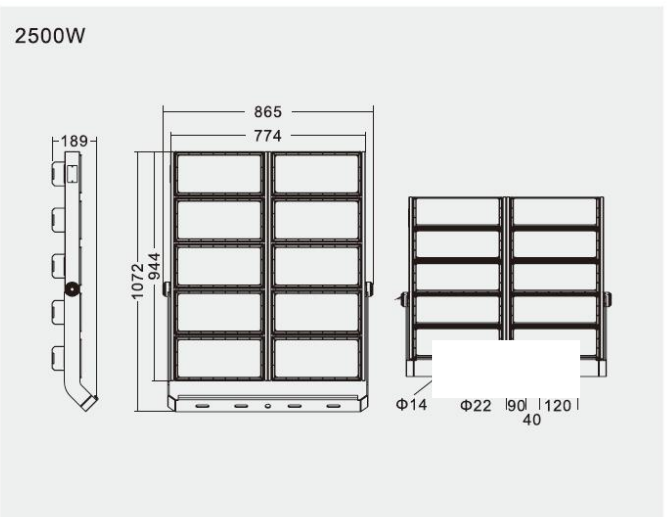
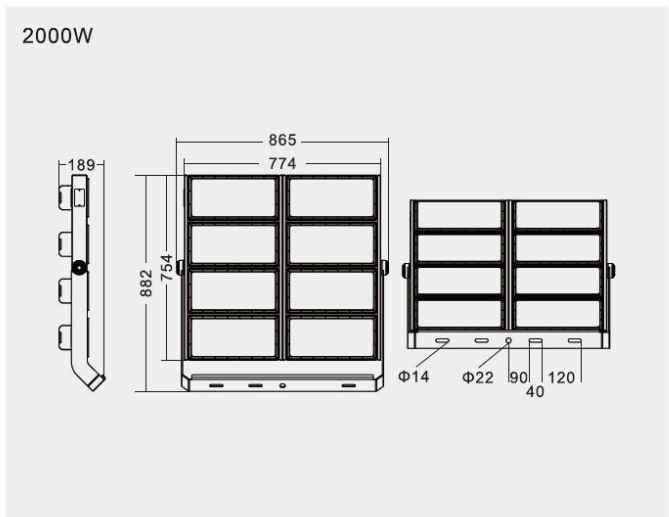
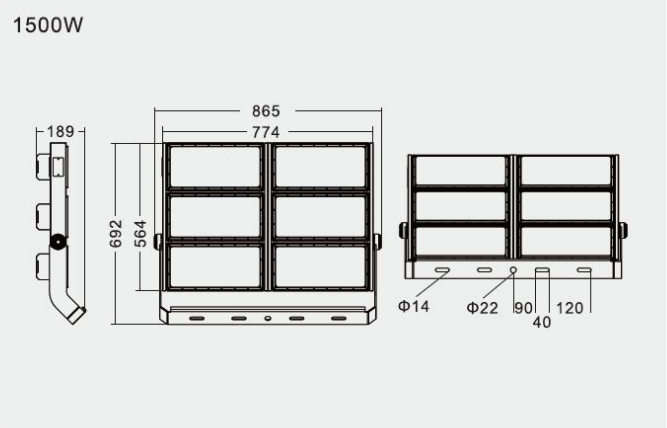
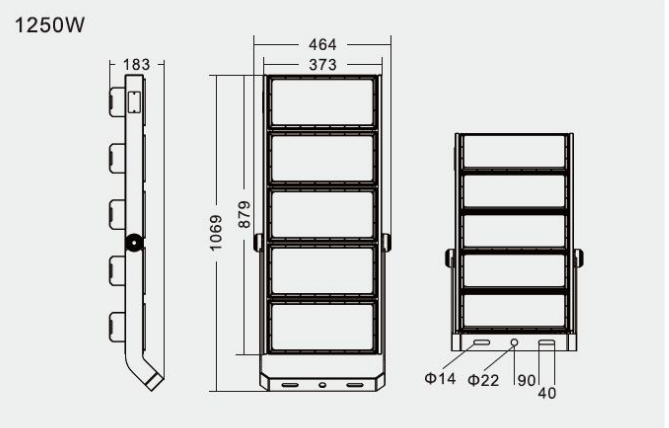
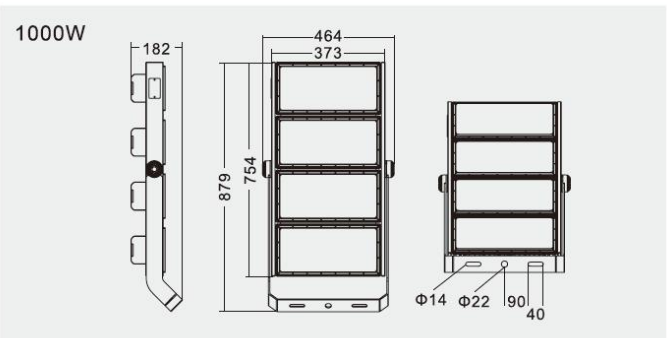
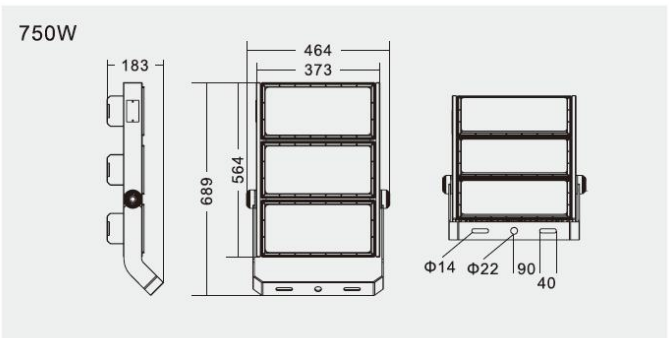
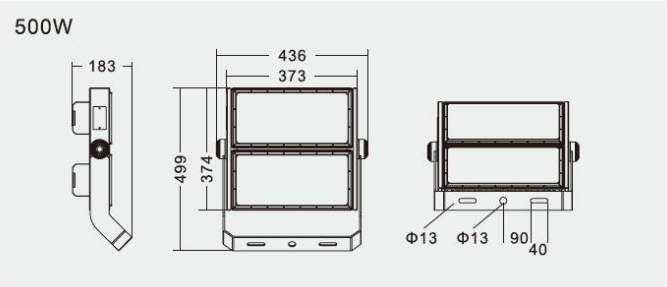
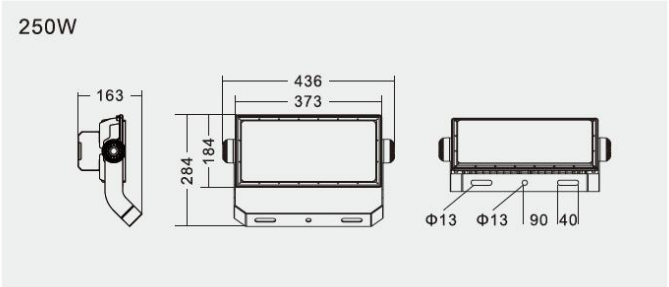
Parameters

Model NO. ONOR-	GL-250W	GL-500W	GL-750W	GL-1000W	GL-1250W	GL-1500W	GL-2000W	GL-2500W
Power	250W	500W	750W	1000W	1250W	1500W	2000W	2500W
Lumen	40000lm	80000lm	120000lm	160000lm	200000lm	240000lm	320000lm	400000lm
Efficacy	160lm/W							
CCT	2800-3000K; 3000-3200K; 4000-4500K; 5000-5500K; 6000-6500K							
CRI	≥80Ra							
LED	Lumileds SMD 3030, 336pcs per module							
PF	>0.97							
Input Voltage	AC100-277V(Normal); AC100-305V(Meanwell)							
THD	15%<THD<20%							
Weight	5.7kg	13.5kg	18.7kg	24.1kg	29.5kg	37.4kg	48.2kg	59kg
Sizes(mm)	436*284*163	436*499*183	464*689*183	464*879*182	464*1069*183	865*692*189	865*882*189	865*1072*189
Beam Angle	30° / 45° / 60° / 90°							
Work Temp	-35~55°C							
Humidity	15%~90% RH, no condensing							
Finish	Sprayed with outdoor special powder							
Life Span	≥50,000 Hrs (LM70 @ 35°C)							
IP Grade	IP66							
IK Grade	IK08							
Product Material								
Power Wire			Body material			Electronic safety grade		
Rubber cable(3*1mm ²) L=0.5m			PC lens + Aluminum housing			Class I		

Light distribution curves



Dimensions



Packing

Model	Power	N.W.	G.W.	Q'ty/Ctn (pcs)	Outer Carton (cm)
ONOR-GL-250W	250W	5.7kg	6.2kg	1	33*43*17
ONOR-GL-500W	500W	13.5kg	14.4kg	1	52*49*18
ONOR-GL-750W	750W	18.7kg	20kg	1	71*49*18
ONOR-GL-1000W	1000W	24.1kg	25.8kg	1	90*49*18
ONOR-GL-1250W	1250W	29.5kg	31.6kg	1	109*49*18
ONOR-GL-1500W	1500W	37.4kg	40.1kg	1	71*91*18
ONOR-GL-2000W	2000W	48.2kg	51.5kg	1	90*91*18
ONOR-GL-2500W	2500W	59kg	62.9kg	1	109*91*18

