

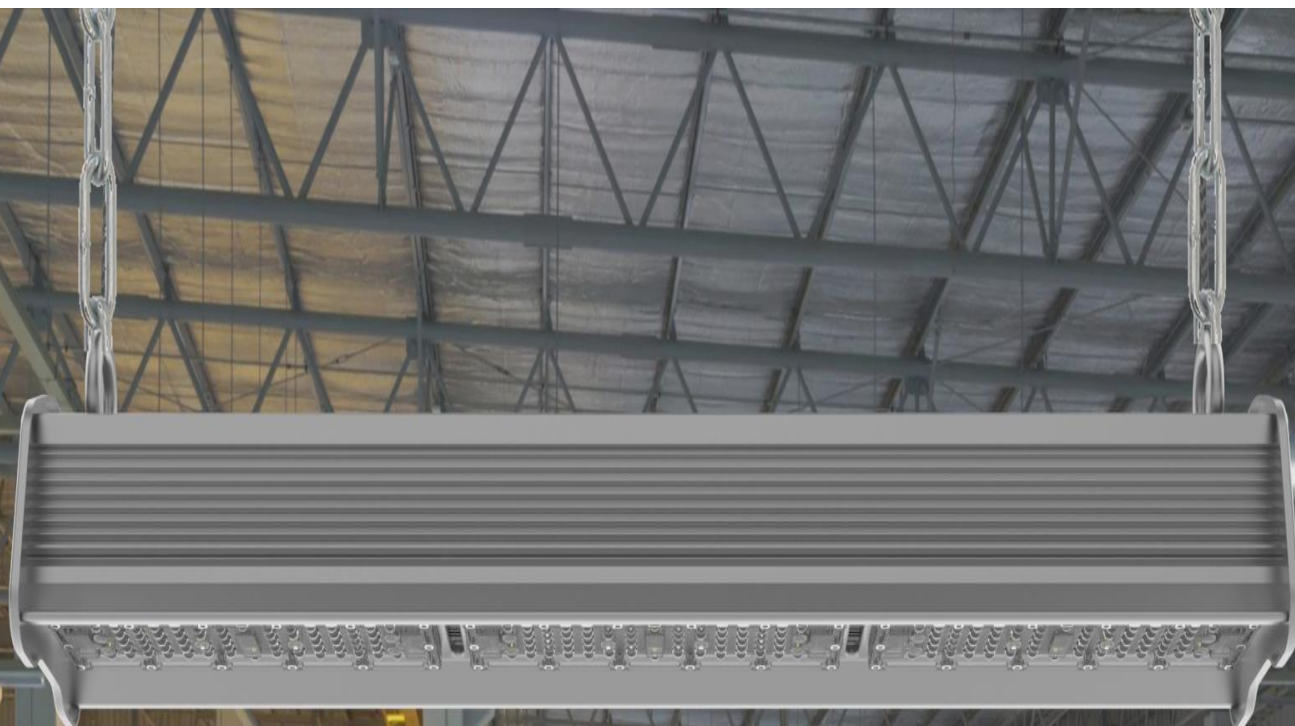


**ONOR Lighting Engineering Co., Ltd.**

www.onorled.com sales@onorlighting.com

Tel: +86-755-23779510 Fax: 86-755-23779510

Add: Rijing Industrial Park, Shakeng 2nd Road, 518118  
Biling, Pingshan New District, Shenzhen China



**TITAN series**  
**LED Linear Bay Light**



## Introduction

### Materials

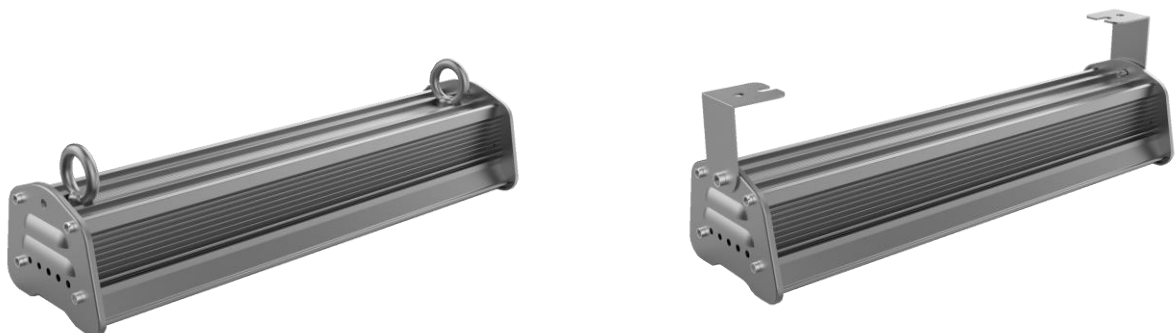
Patented fin aluminium heatsink structure; High quality aluminium processing technique; Special surface treatment process; High brightness LED light source, high efficiency and long life power supply.

### Applications

Widely used in warehouses, workshop, highway toll station, gas station, supermarket, exhibition hall, gymnasium, and other industrial and commercial lighting purposes

### Features

- \* Design with patent, high quality aluminum processing technology, special surface treatment.
- \* High Lumen Philips chip, high performance MeanWell /Inventronics driver, Patented design
- \* Energy savings, no Pb and Hg radiations, emits low heat.
- \* Easy installation and maintenance, dust prevention, longer lifetime with high lumen maintenance
- \* International operating voltage AC90-305V, PFC power



## Parameter:

### ONOR-LBL-50W



<b>Model</b>	50W	
<b>Input Voltage</b>	AC90--305V	
<b>Frequency</b>	50-60 HZ	
<b>LED Source</b>	LUXEON 3030 2D	
<b>LED Power</b>	50W	
<b>Total System Power</b>	55W	
<b>LED Qty</b>	64 Pcs	
<b>Led Luminous Efficiency</b>	130 lm / W	
<b>Initial Luminous Flux</b>	6,500 LM	
<b>Color Temperature</b>	2700K - 6500K	
<b>Color Rendering Index</b>	Ra>70	
<b>Working Temperature</b>	-40°C ~ 50°C	
<b>Storage Temperature</b>	-40°C ~ +65°C (Best 25°C)	
<b>IP Rating</b>	IP 65	
<b>Net weight</b>	2.5KG	
<b>Life-span</b>	>50000H	
<b>Power Cord</b>	0.75 mm <sup>2</sup> triple shield wire	
<b>Connecting Wire</b>	Brown	L live
	Blue	N Neutral
	Yellow/Green	G Earth
<b>Light Fixture Color</b>	Black	



## ONOR-LBL-100W



<b>Model</b>	100W	
<b>Input Voltage</b>	AC90--305V	
<b>Frequency</b>	50-60 HZ	
<b>LED Source</b>	LUXEON 3030 2D	
<b>LED Power</b>	100W	
<b>Total System Power</b>	105W	
<b>LED Qty</b>	128 Pcs	
<b>Led Luminous Efficiency</b>	130 lm / W	
<b>Initial Luminous Flux</b>	13,000 LM	
<b>Color Temperature</b>	2700K - 6500K	
<b>Color Rendering Index</b>	Ra>70	
<b>Working Temperature</b>	-40°C ~ 50°C	
<b>Storage Temperature</b>	-40°C ~ +65°C (Best 25°C)	
<b>IP Rating</b>	IP 65	
<b>Net weight</b>	4.2KG	
<b>Life-span</b>	>50000H	
<b>Power Cord</b>	0.75 mm <sup>2</sup> triple shield wire	
<b>Connecting Wire</b>	Brown	L live
	Blue	N Neutral
	Yellow/Green	G Earth
<b>Light Fixture Color</b>	Black	

## ONOR-LBL-150W

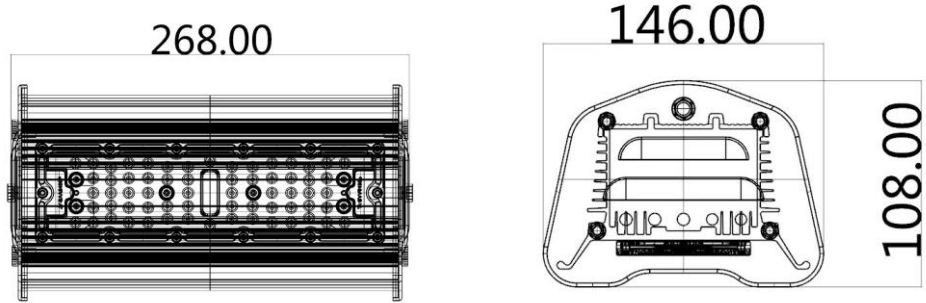


<b>Model</b>	150W	
<b>Input Voltage</b>	AC90--305V	
<b>Frequency</b>	50-60 HZ	
<b>LED Source</b>	LUXEON 3030 2D	
<b>LED Power</b>	150W	
<b>Total System Power</b>	155W	
<b>LED Qty</b>	192 Pcs	
<b>Led Luminous Efficiency</b>	130 lm / W	
<b>Initial Luminous Flux</b>	19,500 LM	
<b>Color Temperature</b>	2700K - 6500K	
<b>Color Rendering Index</b>	Ra>70	
<b>Working Temperature</b>	-40°C ~ 50°C	
<b>Storage Temperature</b>	-40°C ~ +65°C (Best 25°C)	
<b>IP Rating</b>	IP 65	
<b>Net weight</b>	5.8KG	
<b>Life-span</b>	>50,000H	
<b>Power Cord</b>	0.75 mm <sup>2</sup> triple shield wire	
<b>Connecting Wire</b>	Brown	L live
	Blue	N Neutral
	Yellow/Green	G Earth
<b>Light Fixture Color</b>	Black	

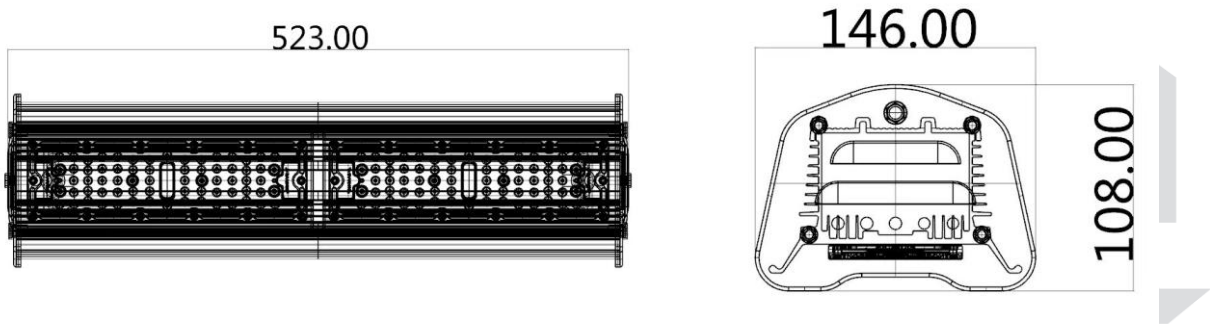
Remark: The light parameters may differ between different color temperature, tolerances ≤ 5%.

## Product Dimension

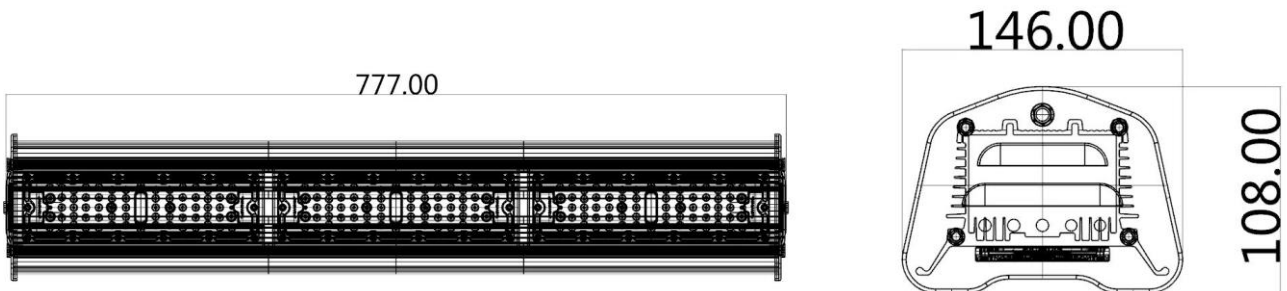
### ONOR-LBL-50



### ONOR-LBL-100W

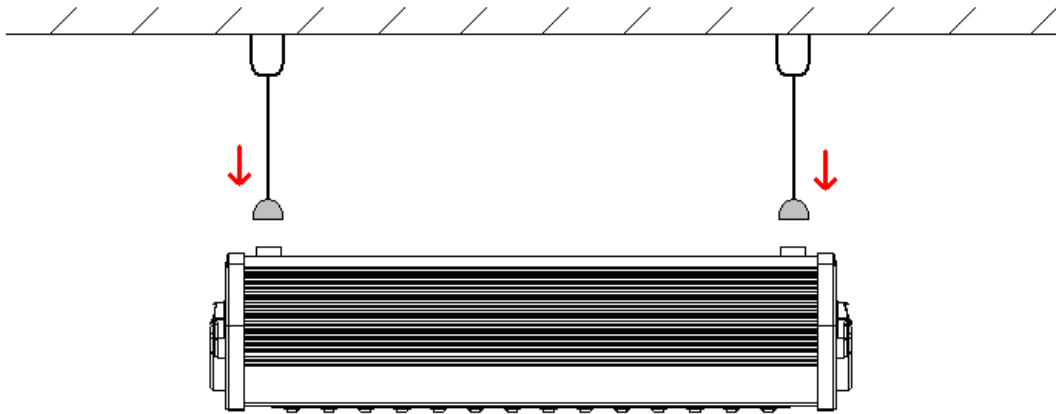


### ONOR-LBL-150W

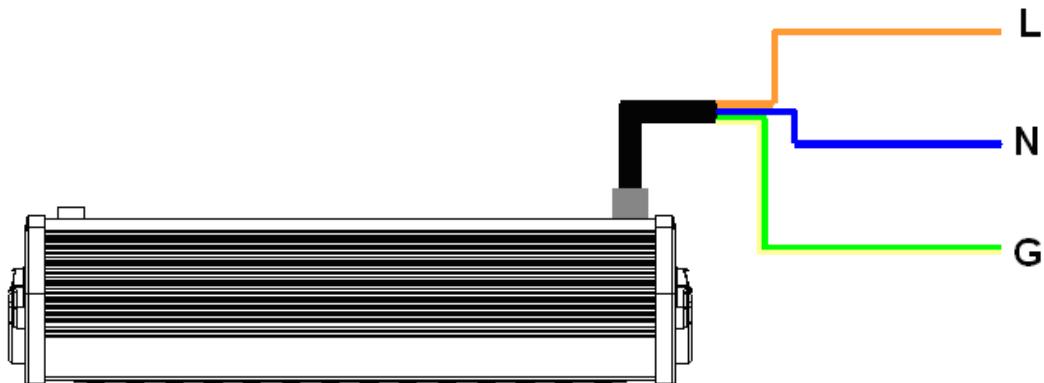


## Installation Guideline

1. Make the bead ring is fastened to the ceiling, and hang the light up with hook.



2. For safety, make sure the power cables are connected by electricians.



## Package

	50W	100W	150W
N.W	2.5kg	4.2kg	5.8kg
G.W	2.8kg	4.6kg	6.2kg
Packing Size(W ,L,H)	36*17.5*14CM	64.5*17.5*14 cm	92*17.5*14 cm

